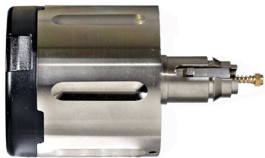


# Datasheet

## SensoLock® electronic cylinder for MIFARE (stand-alone, offline) or Prox (stand-alone)



SensoLock®



SensoLock®66

Technical data	
Power supply	SensoLock® and SensoLock®66: 2 batteries, type CR2 Lithium 3V
Battery life cycle	Up to 80.000 actuations during one battery life cycle
Low-Power opening	Possible at any time with external power supply
Wiring required	No
Operating temperature	-20°C to +65°C
Storage temperature	-45°C to +85°C
Functions	
Automatic activation of knob electronics when scanning a card/tag	Yes
Engagement time	Programmable from 1 to 15 seconds
Actuation time	Programmable from 1 to 15 seconds
Identification by passive transponder in the card/tag	Yes (without power supply)
Possible to secure with vandal shield	Yes (only SensoLock®)
Integration in padlock	Yes
Vandal shield available for padlock	Yes (only SensoLock®66)
Housing	
Length of knob (standard)	SensoLock®: 42,7 mm SensoLock®66: 45,0 mm
Diameter of the knob (standard)	SensoLock®: 40,0 mm SensoLock®66: 44,0 mm
Material: Cylinder, knob housing and shell	Nickel-plated brass
Material: Antenna area	Hard plastic
IP	SensoLock® and SensoLock®Compact: IP55 SensoLock®66: IP66 (EN 60529)
Mounting	IP55: Indoor IP66: Outdoor application. For outdoor application, the ambient conditions must be verified.
Types	
SensoLock® transponder versions	Prox stand-alone, MIFARE stand-alone and MIFARE offline
SensoLock® electronic knob cylinder versions	SensoLock®, SensoLock®66
SensoLock® cylinder sizes	DIN profile cylinder 30/30 to 70/70, DIN single profile cylinder 30/10 to 70/10 and scandinavian cylinders

<b>MIFARE offline specifications</b>	
Administration	Configuration card, event card, blacklist card, battery card and disassembly card
Transmit frequency	13.56 MHz MIFARE-NFC card reader
Customizable access group authorization	Yes
Events logged in the knob	Up to 424
Number of authorizations programmable	Unlimited*
Control access with time schedules and card validation	Yes*
<b>MIFARE stand-alone specifications</b>	
Administration	Programming card, systemcard, battery change card and disassembly card
Transmit frequency	13.56 MHz MIFARE-NFC card reader
Number of authorizations programmable	96
<b>Prox stand-alone specifications</b>	
Administration	Programming card, systemcard, battery change card and disassembly card
Transmit frequency	125 kHz EM-Marine proximity card reader
Number of authorizations programmable	96
<b>Certifications</b>	
Certified	EN15684, EN60529*

\* Depending on the system version